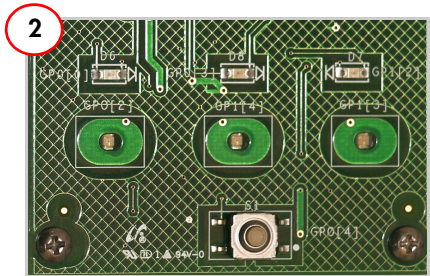


1. Insert the AAA battery.
2. Remove the jumper from J2.
3. Observe that the Power LED lights up.



1. Touch the CapSense buttons to change the status of the respective LEDs.
2. Press the mechanical button S1 to light up all status LEDs.

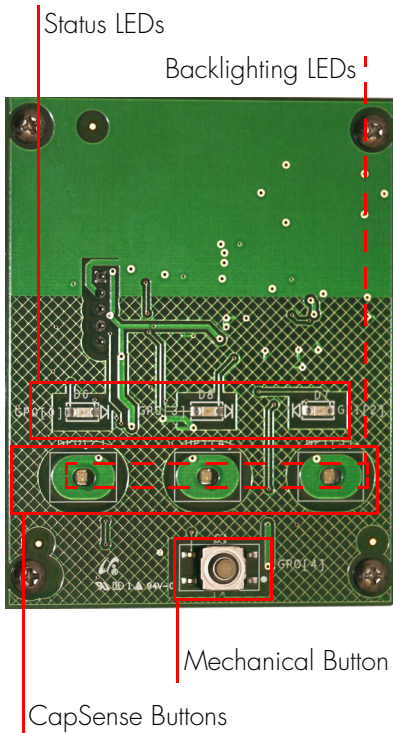


Insert the kit CD and run the CD's autorun utility.

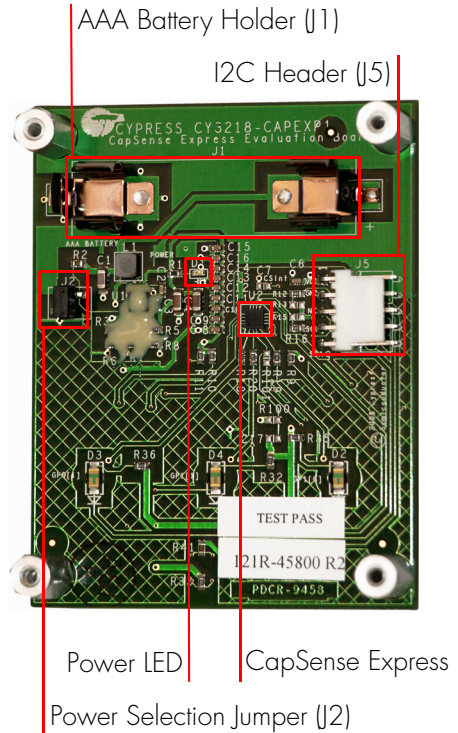


Open the guide and install PSoC Programmer and PSoC Designer.

## Top View



## Bottom View



For the latest information about this kit, visit  
<http://www.cypress.com/go/CY3218-CAPEXP1>

