

NO.	DATE	BY	CHKD	DESCRIPTION OF REVISIONS	BY	CHKD	DATE

FIG.1 RECOMMENDED PCB PATTERN (THROUGH HOLE)

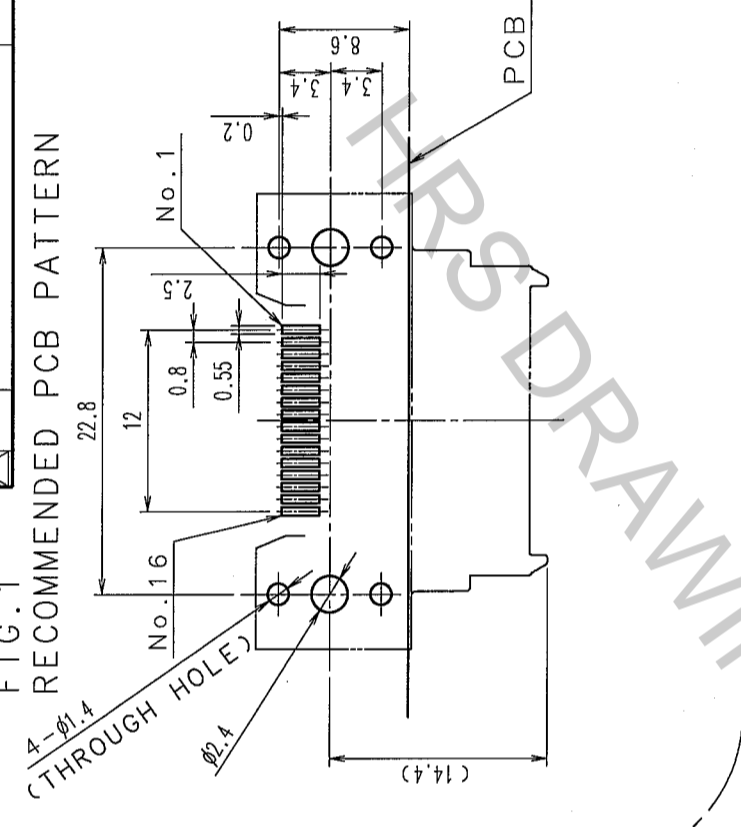


FIG.2: BEFORE AND AFTER MATING

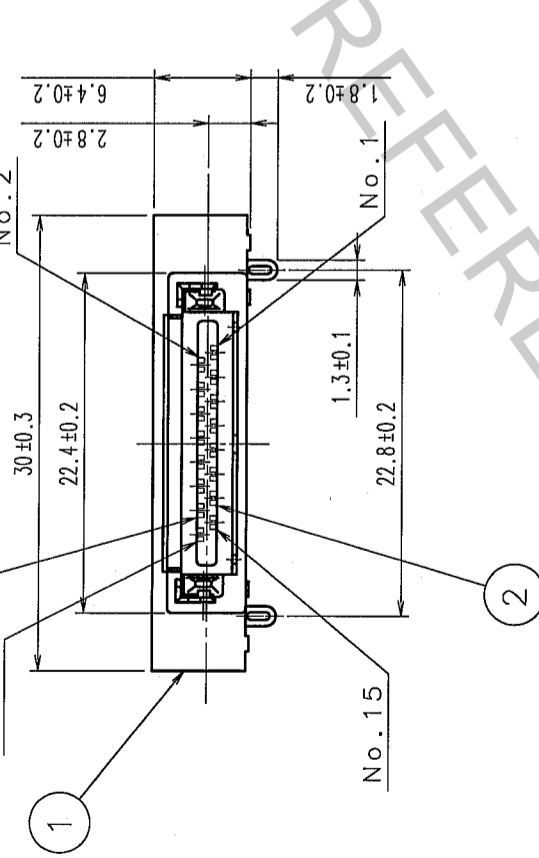
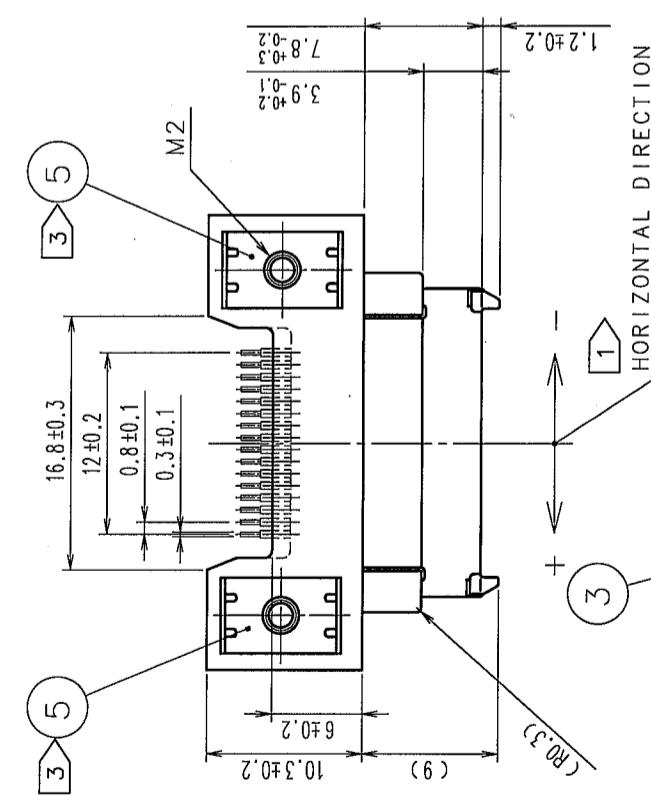
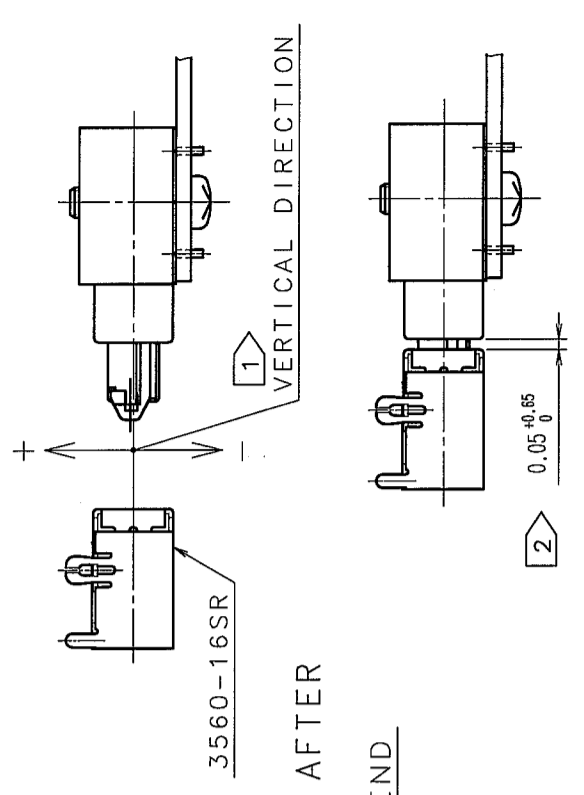
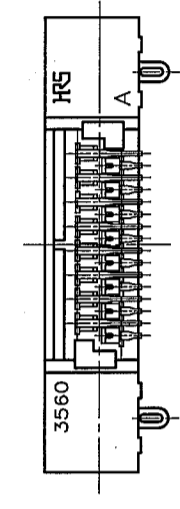
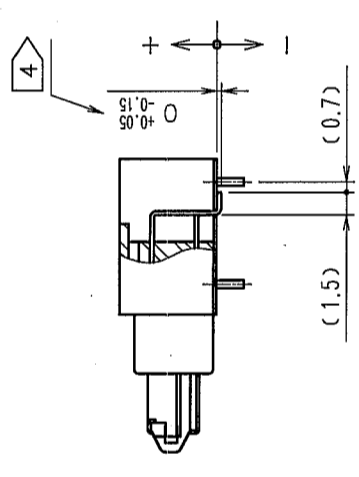


FIG.3 SMT CONTACT DIMENSION



NOTE ① FLOATING DISTANCE IN HORIZONTAL AND VERTICAL DIRECTIONS IS ±0.7. (APPLICABLE CONNECTOR: 3560-16S OR 3560-16SR)
 ② GAP BETWEEN MATED PLUG AND RECEPTACLE TO BE 0.05^{+0.05}/₀.
 ③ REFERENCE NO.④ AND ⑤ ARE CONNECTED INSIDE THE CONNECTOR. (GROUND IS TO BE CONNECTED TO PCB BY REFERENCE NO.⑤).
 ④ SMT DIMENSION OF CONTACTS (REFERENCE NO.② AND ③) SHOWN IN FIG.3.

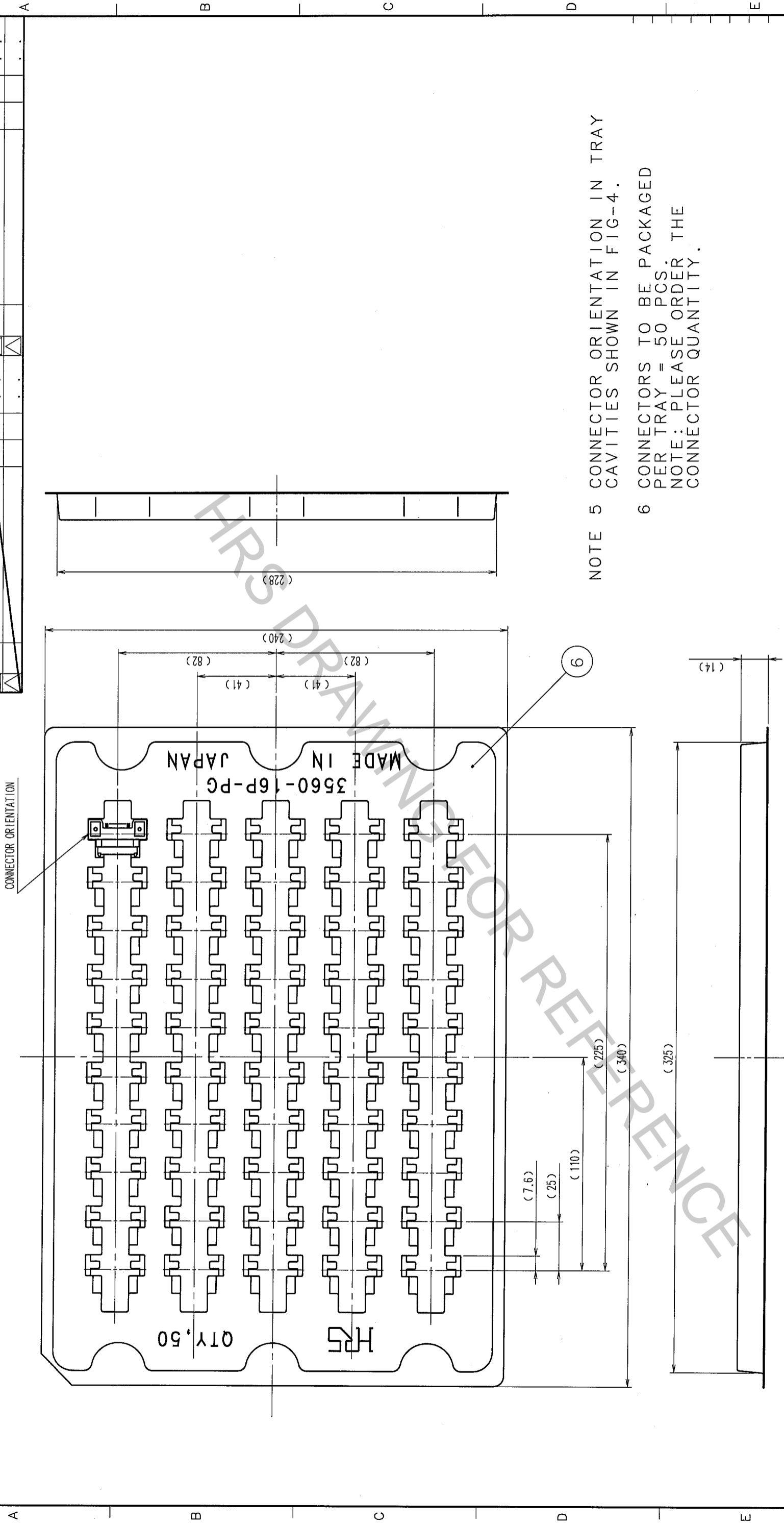
NO.	MATERIAL	FINISH, REMARKS	NO.	MATERIAL	FINISH, REMARKS
3	COPPEY ALLOY	SELECTIVE GOLD PLATING + SELECTIVE TIN COPPER PLATING	6	PVC	
2	COPPEY ALLOY	SELECTIVE GOLD PLATING + SELECTIVE TIN COPPER PLATING	5	COPPEY ALLOY	TIN PLATING
1	POLYAMIDE	BLACK UL94V-0	4	STAINLESS STEEL	

CODE NO. (COLD)	DRAWN	DESIGNED	CHECKED	APPROVED	RELEASED
	Y. Sato	T. Igarashi	Y. Enami	H. Murai	
	05.10.13	05.10.13	05.10.13	05.10.13	

DRAWING NO.	EDC3-120892-02	PART NO.	3560-16P-PG(50)
SCALE	2 : 1	CODE NO.	CL235-0016-0-50
UNITS	mm		

In case that the application demands a high level of reliability, such as automotive, please contact a company representative for further information.

FIG-4. TRAY DIMENSION



NOTE 5 CONNECTOR ORIENTATION IN TRAY CAVITIES SHOWN IN FIG-4.

6 CONNECTORS TO BE PACKAGED PER TRAY = 50 PCS.
NOTE: PLEASE ORDER THE CONNECTOR QUANTITY.

NO.	DATE	BY	CHKD	DESCRIPTION OF REVISIONS	COUNT	DATE	BY	CHKD	DATE

TO	
Q1	

NO.	MATERIAL	FINISH, REMARKS	NO.	MATERIAL	FINISH, REMARKS

CODE NO. (OLD)		DRAWN		DESIGNED		CHECKED		APPROVED		RELEASED
		Y. Sato		J. Yamaguchi	Y. Enami					
		05.10.13		05.10.13	05.10.13			05.10.13		

PACKAGING SPECIFICATION		PART NO.	3560-16P-PG(50)
DRAWING NO.	EDC3-120892-02		
SCALE	2 : 1		
UNITS	ITTT		
		CODE NO.	CL235-0016-0-50
			2/2