

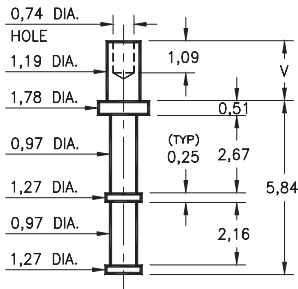
# MALE PCB PINS

## SOLDER TERMINAL TURRETS

### 2110

2110-X-00-XX-00-00-07-0

Swage mount in 1,32 hole

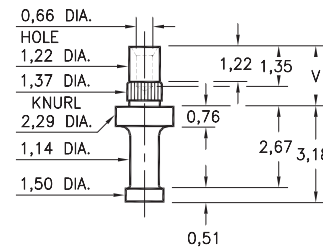


Basic Part Number	Board Thickness	Length V
2110-1	0,79	1,24
2110-2	1,57	2,08

### 2333

2333-X-00-XX-00-00-07-0

Press-fit & swage in 1,32 mounting hole

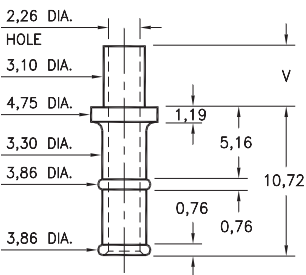


Basic Part Number	Board Thickness	Length V
2333-1	1,98	2,62
2333-2	1,57	2,21
2333-3	1,19	1,83

### 2821

2821-X-00-XX-00-00-07-0

Swage mount in 3,18 hole

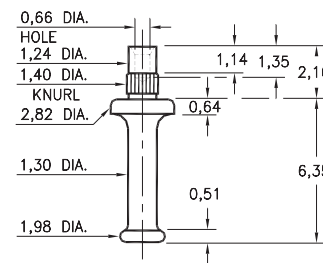


Basic Part Number	Board Thickness	Length V
2821-2	1,57	2,77
2821-3	2,39	3,58
2821-4	3,18	4,37

### 2533

2533-0-00-XX-00-00-07-0

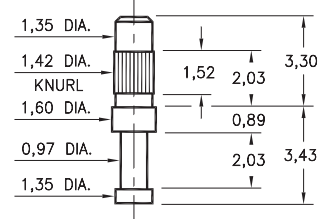
Press-fit & swage in 1,32 mounting hole  
For a 1,57 to 2,39 thick board



### 2101

2101-3-00-XX-00-00-07-0

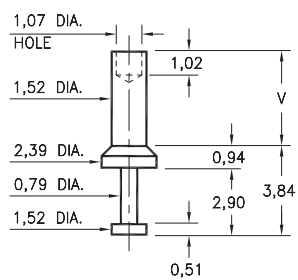
Press-fit in 1,35 mounting hole  
For a 1,57 to 2,39 thick board



### 2316

2316-X-00-XX-00-00-07-0

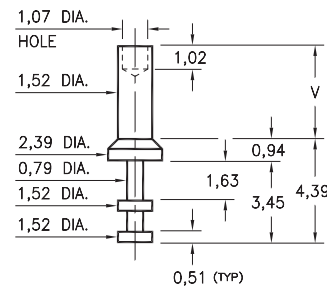
Swage mount in 1,63 hole



### 2317

2317-X-00-XX-00-00-07-0

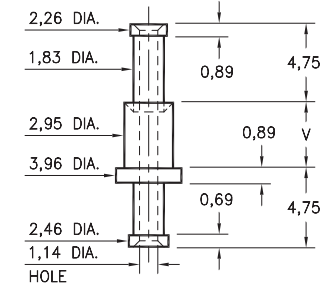
Swage mount in 1,63 hole



### 2708

2708-X-00-XX-00-00-07-0

Swage mount in 3,05 hole



Basic Part Number	Board Thickness	Length V
2XXX-1	0,79	1,57
2XXX-2	1,57	2,39
2XXX-3	2,39	3,18
2XXX-4	3,18	3,96

#### SPECIFICATIONS:

**Pin Material:** Brass Alloy 360, 1/2 Hard  
(Swage pins are annealed)

**Dimensions:** Millimeters

**Tolerances On:** Lengths:  $\pm 0,13$   
Diameters:  $\pm 0,051$   
Angles:  $\pm 2^\circ$



ORDER CODE: **XXXX - X - 00 - XX - 00 - 00 - 07 - 0**

BASIC PART #

SPECIFY PIN FINISH:

- 01 5,08 $\mu$ m TIN/LEAD OVER NICKEL
- ◆ 80 5,08 $\mu$ m TIN OVER NICKEL (RoHS)
- ◆ 44 7,62 $\mu$ m SILVER OVER COPPER (RoHS)
- 50 7,62 $\mu$ m ELECTRO-SOLDER (60/40 SnPb)

