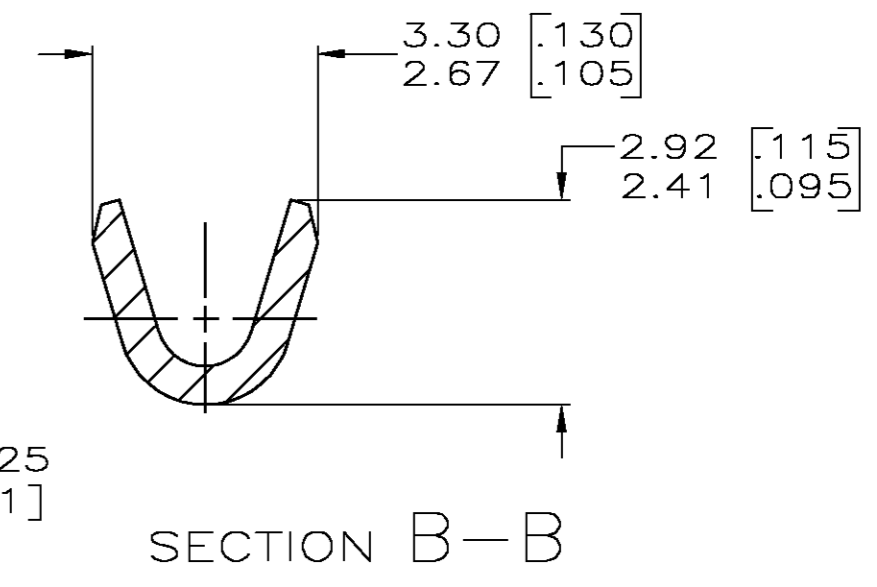
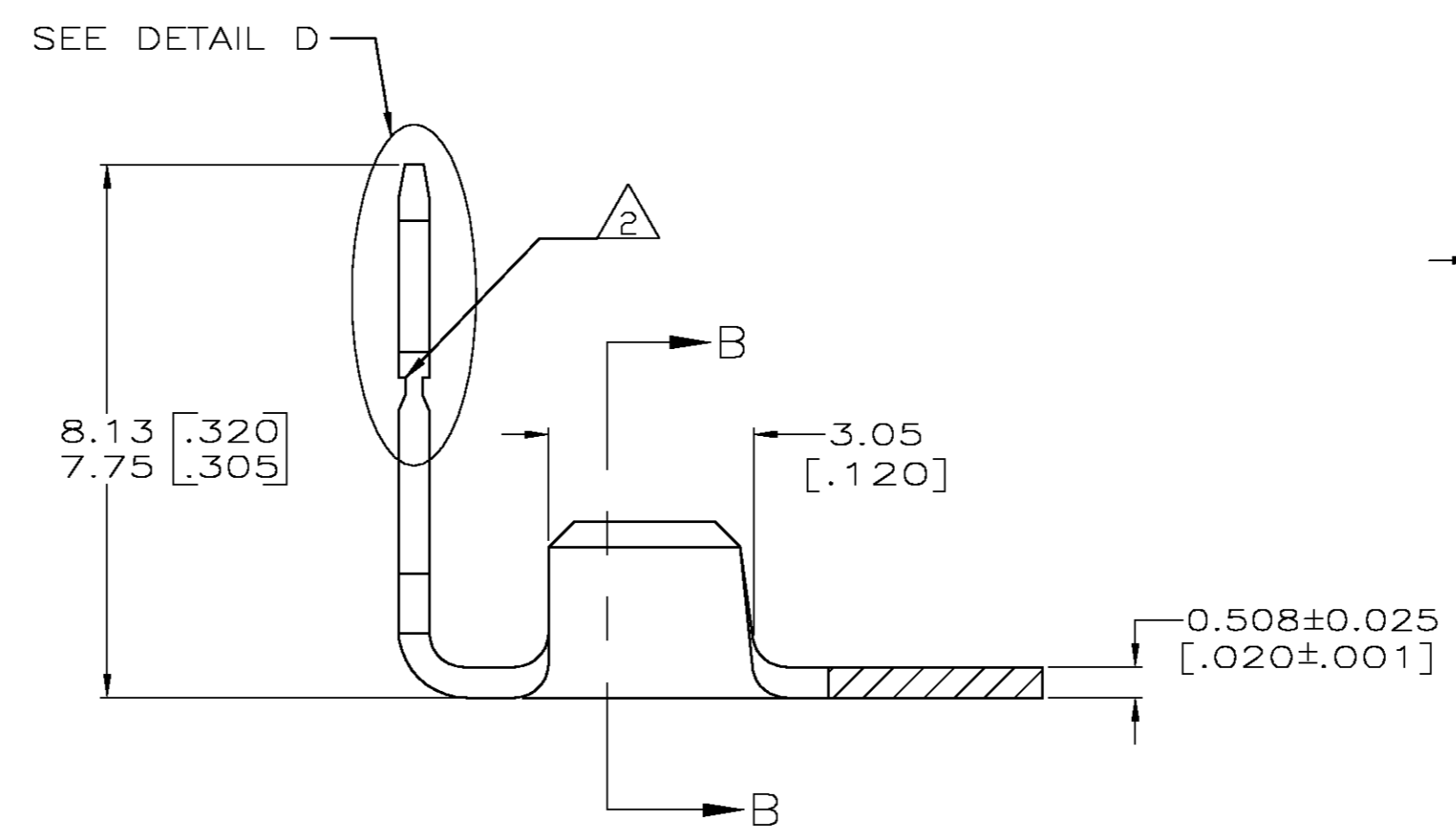
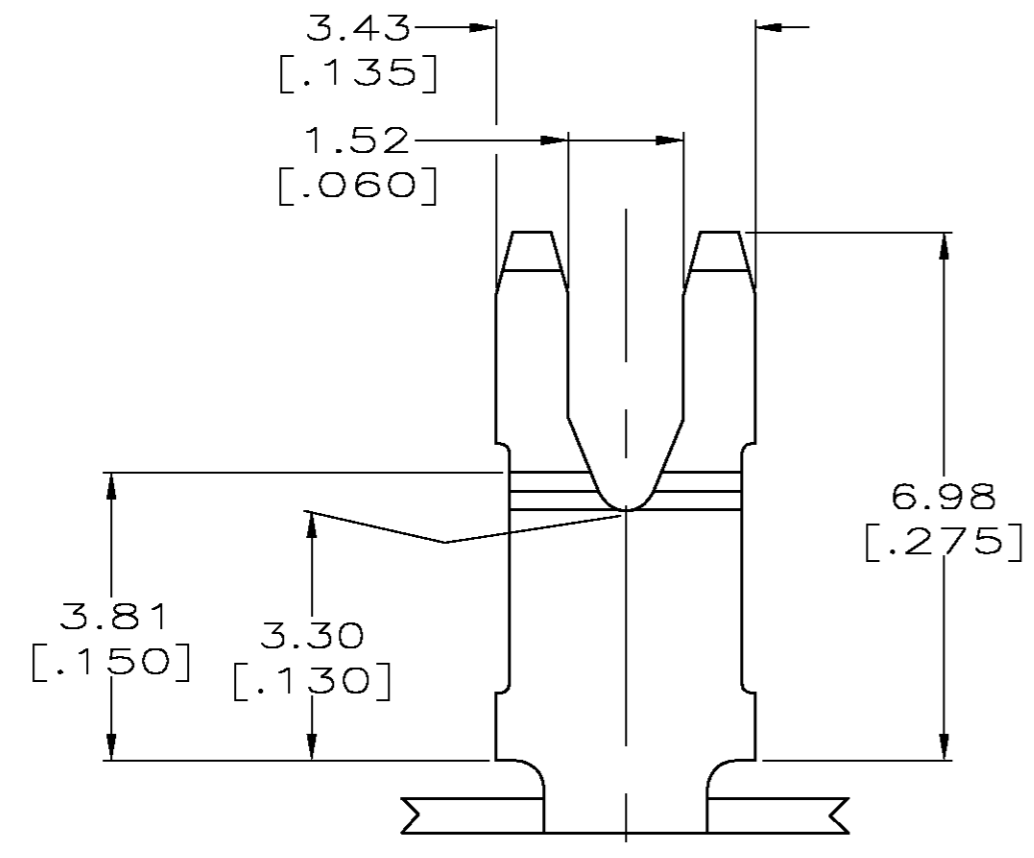
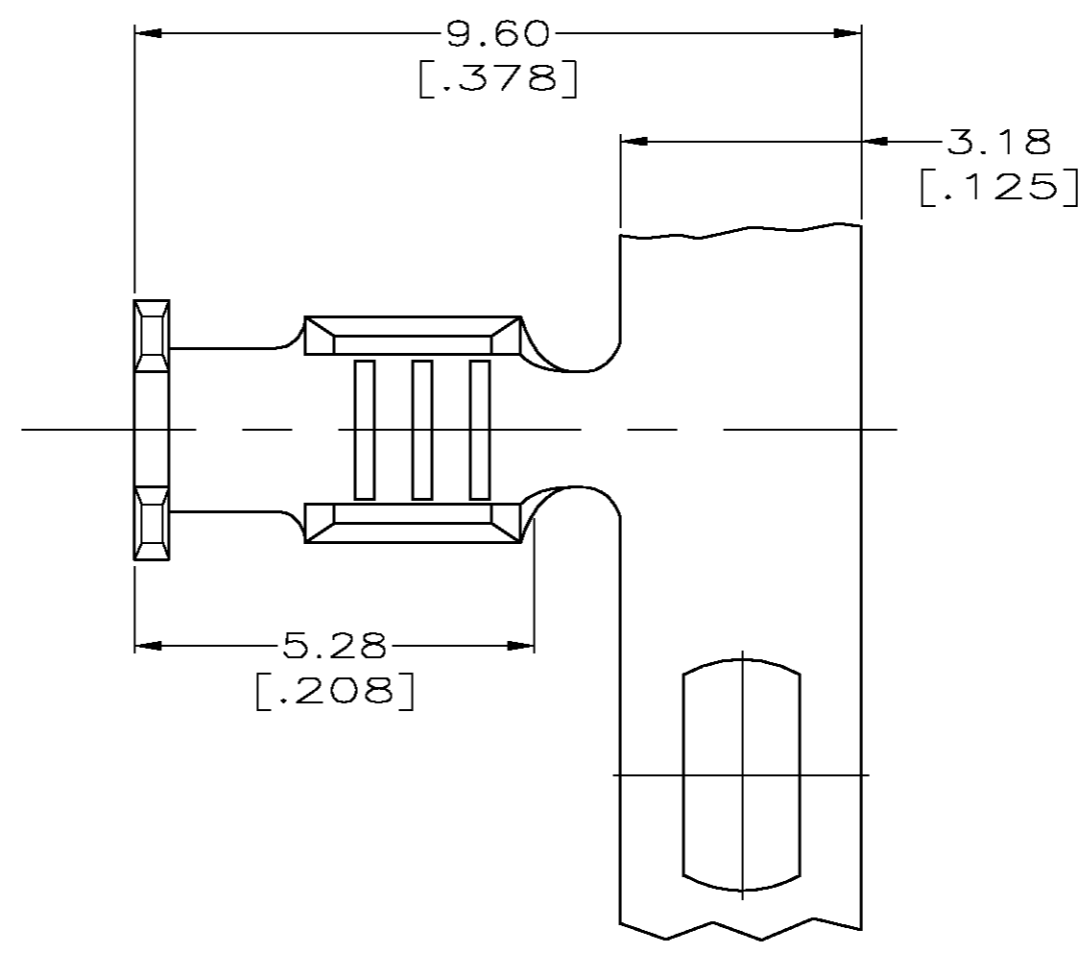
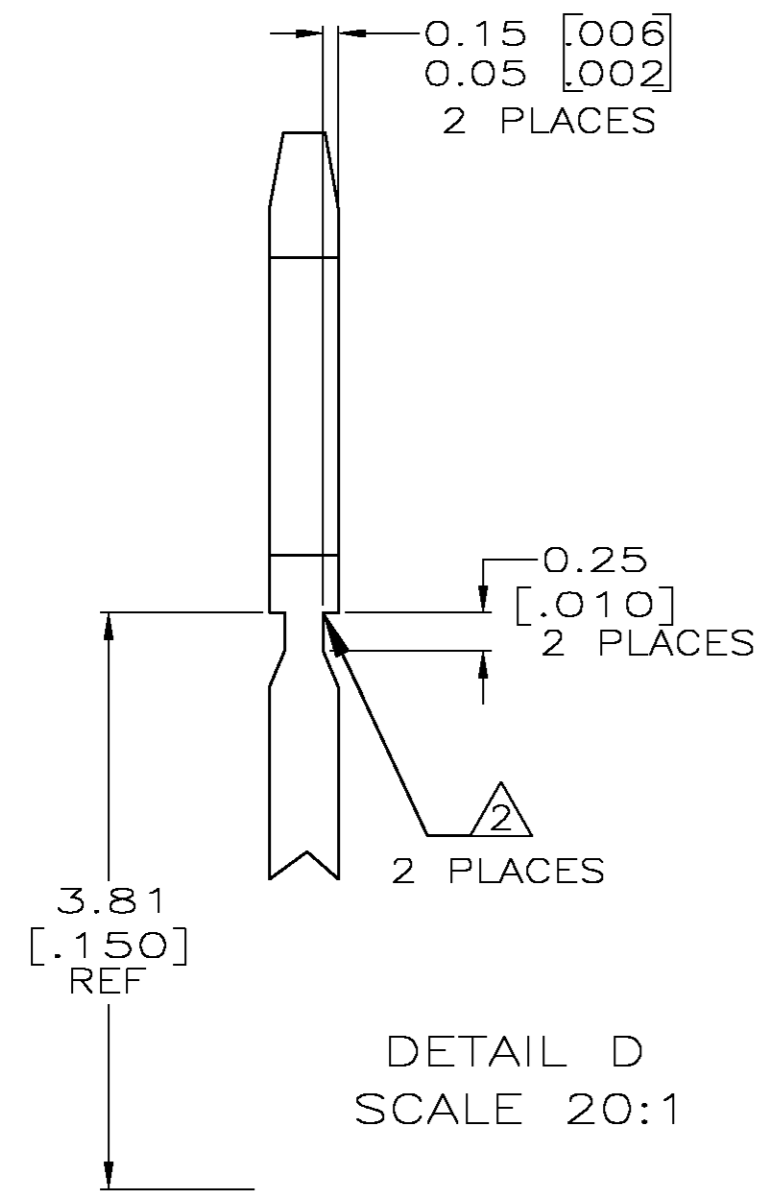


THIS DRAWING IS UNPUBLISHED. RELEASED FOR PUBLICATION
 © COPYRIGHT BY TYCO ELECTRONICS CORPORATION. ALL RIGHTS RESERVED.

LOC		DIST		REVISIONS			
P	LTR	DESCRIPTION	DATE	DWN	APVD		
AF	50	G	REVISED PER 0G3A-0750-02	18DEC02	MF	KR	

1 CONTINUOUS STRIP ON REELS WITH TERMINALS LOCATED ON 9.14 ± 0.08 [.360 ± .003] CENTERS.
 △ FOR OPTIMUM RETENTION FORCE IN POKE-IN TYPE MAG-MATE TERMINALS, ONE OF THE SERRATIONS AS SHOWN MUST BE ENGAGED WITH THE EDGE OF THE LEAF.



0.3-0.8mm ² [#22-18 AWG]	63410-1
WIRE RANGE	PART NUMBER

THIS DRAWING IS A CONTROLLED DOCUMENT.		DWN	JR RUTH	15NOV01	 Tyco Electronics Corporation Harrisburg, PA 17105-3608									
DIMENSIONS: MM		CHK	MICHAEL S. FEHER	15NOV01										
TOLERANCES UNLESS OTHERWISE SPECIFIED:		APVD	KURT A. RANDOLPH	15NOV01										
0 PLC ± - 1 PLC ± - 2 PLC ± 0.25 [.010] 3 PLC ± - 4 PLC ± - ANGLES ± -		PRODUCT SPEC	108-22055	NAME		TAB, POKE-IN, MAG-MATE™								
MATERIAL: 082 BRASS		FINISH	0.000381 [.000015]	MIN PRE-TIN PLATE	APPLICATION SPEC	114-2050	SIZE	A2	CAGE CODE	00779	DRAWING NO	C=63410	RESTRICTED TO	-
CUSTOMER DRAWING		WEIGHT	-		SCALE	10:1	SHEET	1	OF	1	REV	G		