



Accessories

– for Zlinx™ Standard Radio Modem products

ZPx series industrial radio modems wirelessly connect two or more serial devices, indoors or outdoors, for use in many applications such remote monitoring, remote telemetry, SCADA and more.

B+B SmartWorx offers a selection of accessories and replacement parts for use with these products.

ORDERING INFORMATION

MODEL NUMBER	DESCRIPTION	FOR USE WITH
ZP9D-ANT1	900 MHz, 2.1 dBi Antenna	ZPx Radio Modems
ZP24D-ANT1	2.4 GHz, 2.1 dBi Antenna	ZPx Radio Modems
ZP24D-TB1	Two Terminal Blocks, DIP Switch Cover	ZPx Radio Modems
ZP9D-DIN1	DIN Rail Mounting Clip, Spring, Screws	ZPx Radio Modems

900 MHz, 2.1 dBi Antenna

Model ZP9D-ANT1



Model ZP9D-ANT1 is a 900 MHz spare /replacement antenna for B+B SmartWorx ZPx standard industrial radio modem products .

- + 900 MHz, 2.1 dBi
- + RPSMA male di-pole

2.4 GHz, 2.1 dBi Antenna

Model ZP24D-ANT1

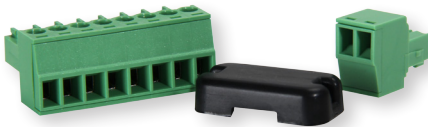


Model ZP24D-ANT1 is a 2.4 GHz spare/replacement antenna for B+B SmartWorx ZPx standard industrial radio modem products .

- + 2.4 GHz, 2.1 dBi
- + RPSMA male di-pole

Terminal Blocks & DIP Switch Cover

Model ZP24D-TB1

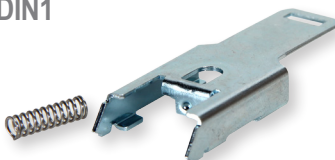


Model ZP24D-TB1 accessory kit includes two removeable terminal blocks and a DIP switch cover for ZPx standard industrial radio modem products. Includes:

- + (1) 2-position 3.5mm terminal block for power input, 8A, 300V, 28-16 AWG
- + (1) 8-position 3.5mm terminal block for serial, 8A, 300V
- + (1) protective DIP switch cover

DIN Rail Mounting Bracket

Model ZP9D-DIN1



Model ZP9D-DIN1 is a replacement DIN rail mounting bracket for ZPx standard industrial radio modem products.

- + Metal mounting bracket with spring and four (4) screws included

All product specifications are subject to change without notice.
Accessories_ZlinxStdRadioModems_5017ds