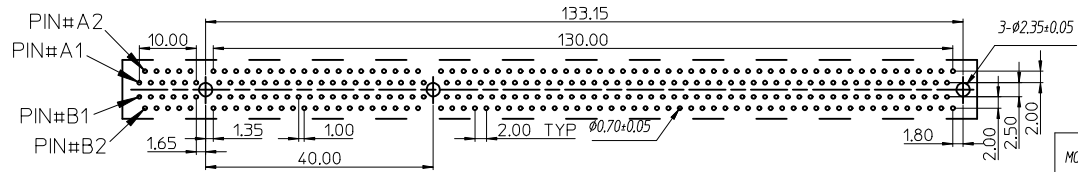
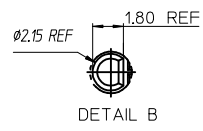
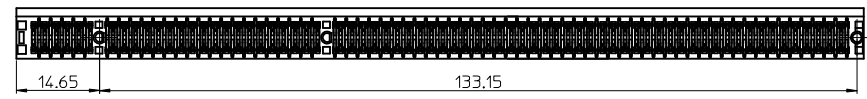


SECTION A-A



- NOTES:  
 1.MATERIALS:  
 1-1.HOUSING:SEE TABLE GLASS FIBER FILLED UL94V-0  
 COLOR:SEE TABLE  
 1-2.CONTACT:SEE TABLE  
 2.PLATING:  
 2-1.CONTACT AREA:SEE TABLE  
 2-2.SOLDER TAIL:SEE TABLE  
 2-3.UNDER PLATING:SEE TABLE  
 3.DATE CODE:TO BE PRINTED  
 4.PRODUCT SPECIFICATION REFER TO PS-87715-200  
 5.PACKAGE SPECIFICATION REFER TO PK-87715-206  
 6.TEST SUMMARY:REFER TO TS-87715-206  
 7.LEAD FREE AND ROHS COMPLIANT.

MOLEX P/N	CIRCUIT SIZE	HOUSING MATERIAL	HOUSING COLOR	TERMINAL MATERIAL	CONTACT PLATING	SOLDERTAIL PLATING	DIM'B'
87715-3914	280	NYLON 46	BLACK	PHOSPHOR BRONZE	GOLD FLASH	100 MICROINCH TIN OVER 50 MICROINCH NICKEL OVERALL	3.00
87715-3915	280	NYLON 46	BLACK	PHOSPHOR BRONZE	15 MICROINCH	100 MICROINCH TIN OVER 50 MICROINCH NICKEL OVERALL	3.00
87715-3916	280	NYLON 46	BLACK	PHOSPHOR BRONZE	30 MICROINCH	100 MICROINCH TIN OVER 50 MICROINCH NICKEL OVERALL	3.00
87715-3917	280	NYLON 46	BLACK	PHOSPHOR BRONZE	GOLD FLASH	100 MICROINCH TIN OVER 50 MICROINCH NICKEL OVERALL	2.54
87715-3918	280	NYLON 46	BLACK	PHOSPHOR BRONZE	15 MICROINCH	100 MICROINCH TIN OVER 50 MICROINCH NICKEL OVERALL	2.54
87715-3919	280	NYLON 46	BLACK	PHOSPHOR BRONZE	30 MICROINCH	100 MICROINCH TIN OVER 50 MICROINCH NICKEL OVERALL	2.54

EWR 2006-0005 & 2006-0019 2005-0094 EC NO: SH2006-0100 DRWN:ALL IN 2006/05/15 CHKD: 2006/05/15 APPR:WMSCHANG 2006/05/16	QUALITY SYMBOLS ▽=0 ▽=0	GENERAL TOLERANCES (UNLESS SPECIFIED) mm INCH 4 PLACES ± --- ± --- 3 PLACES ± --- ± --- 2 PLACES ± 0.25 ± --- 1 PLACE ± 0.25 ± --- ANGULAR ± 3 °	DIMENSION STYLE MM ONLY DRAWN BY TOM DATE 2005/03/22 CHECKED BY ALL IN DATE 2005/03/22 APPROVED BY WWSCHANG DATE 2005/03/22 MATERIAL NO. SEE TABLE	SCALE TITLE 1.0 EDGE CARD 280 CKT VERTICAL DIP CONNECTOR (LEAD FREE VERSION)	DESIGN UNITS METRIC	THIRD ANGLE PROJECTION
	REV DESCRIPTION	DRAFT WHERE APPLICABLE MUST REMAIN WITHIN DIMENSIONS	MOLEX INCORPORATED	DOCUMENT NO. SD-87715-206	SHEET NO. 1 OF 2	
	B	THIS DRAWING CONTAINS INFORMATION THAT IS PROPRIETARY TO MOLEX INCORPORATED AND SHOULD NOT BE USED WITHOUT WRITTEN PERMISSION	MOLEX	SD-87715-206	1 OF 2	
	REV DESCRIPTION	THIS DRAWING CONTAINS INFORMATION THAT IS PROPRIETARY TO MOLEX INCORPORATED AND SHOULD NOT BE USED WITHOUT WRITTEN PERMISSION	MOLEX	SD-87715-206	1 OF 2	

7

6

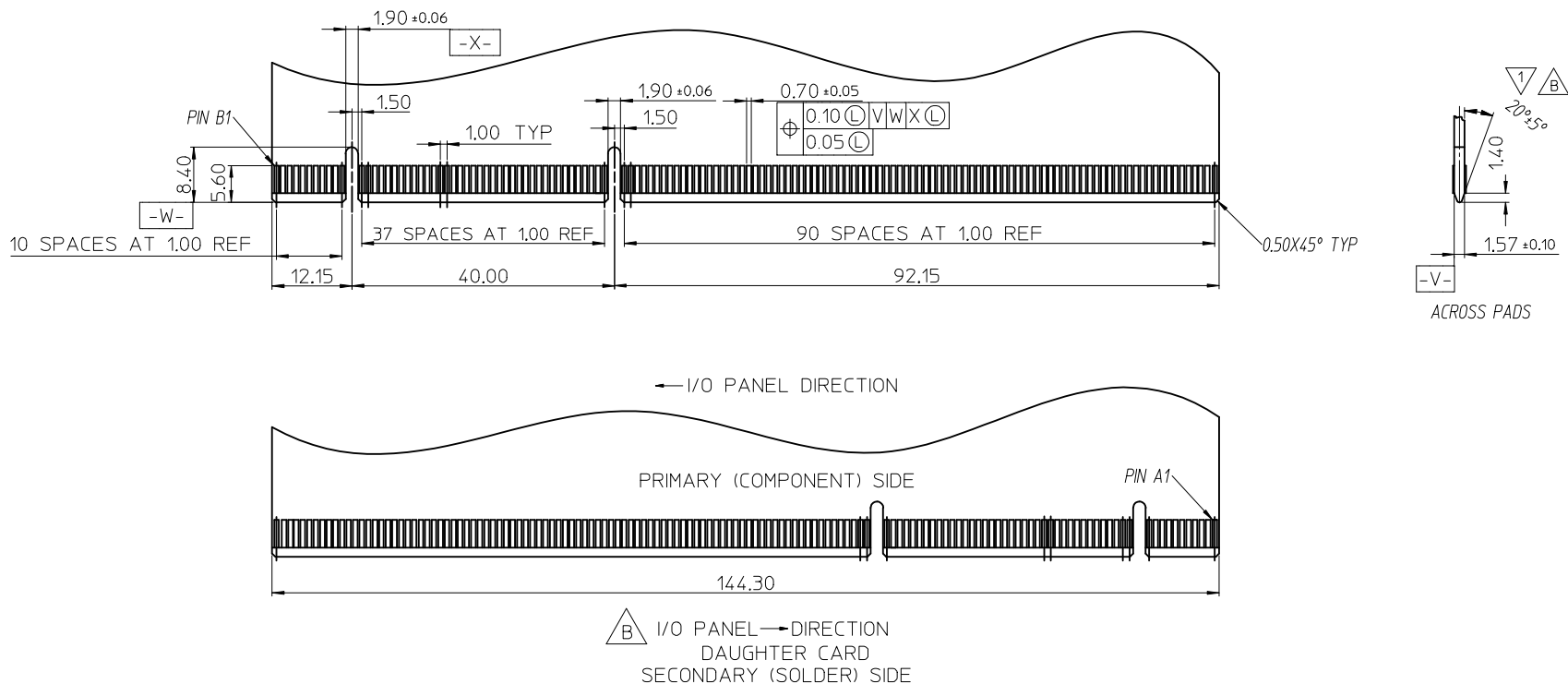
5

4

3

2

1



CHAMFER EDGES MUST BE FREE OF CUTTING BURRS.

SEE SHEET 1 ECT NO: SH2006-0100 DRWN: ALL IN CHKD: APPR: WWSCHANG	2006/05/15 2006/05/15 2006/05/16	DESCRIPTION REV	QUALITY SYMBOLS	GENERAL TOLERANCES (UNLESS SPECIFIED)	DIMENSION STYLE MM ONLY		SCALE 1:1	DESIGN UNITS METRIC	THIRD ANGLE PROJECTION			
			 	mm      INCH 4 PLACES ± --- ± --- 3 PLACES ± --- ± --- 2 PLACES ± 0.25 ± --- 1 PLACE ± 0.25 ± --- ANGULAR ± 3 °	DRAWN BY      DATE TOM              2005/03/22 CHECKED BY      DATE ALL IN            2005/03/22 APPROVED BY      DATE WWSCHANG        2005/03/22 MATERIAL NO.	TITLE 1.0 EDGE CARD 280 CKT VERTICAL DIP CONNECTOR (LEAD FREE VERSION)		MOLEX INCORPORATED		DOCUMENT NO. SD-87715-206	SHEET NO. 2 OF 2	
			DRAFT WHERE APPLICABLE MUST REMAIN WITHIN DIMENSIONS			SEE TABLE		THIS DRAWING CONTAINS INFORMATION THAT IS PROPRIETARY TO MOLEX INCORPORATED AND SHOULD NOT BE USED WITHOUT WRITTEN PERMISSION				
			SIZE			A 4						

6

5

4

3

2

1